

**MAH-CET 2024 FOR
BCA BBA BBM BMS**



**CRASH
COURSE**

DAY - 1

ENGLISH

**Rapid Reading &
Comprehension**





CET Exam Discussion

① CBT

② 100 →

Q
90 mins

40 E | 30 R & M | 15 GK | 75 Computers ✓ ✓

100 Q / 90 M

54 sec

Moderate



English Syllabus Discussion

ENGLISH - TOTAL TIME - 12 Days		
	English Topic	Date
1	Comprehension Reading	26/03/24
2	Comprehension Reading	30/03/24
3	Rearrangement	03/04/24
4	Spellings	07/04/24
5	Cloze Test	11/04/24
6	Synonyms	16/04/24
7	Antonyms	16/02/24
8	Idioms & Phrases	21/04/24
9	One Word Substitution	25/04/24
10	Sentence Improvement	29/04/24
11	Spotting Errors	30/04/24
12	Singular & Plural Nouns	01/05/24



Tips Before Starting English Syllabus

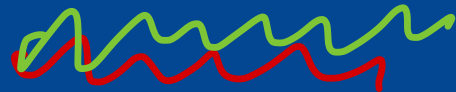
1. Start Reading

- ✓ a. Textbook
- ✓ b. Editorial
- ✓ c. Newspaper
- ✓ d. Book

(45 mins)

DAILY

2. Find meanings for words



Worksheet
Self Study



Reading Comprehension

(5-7 Q)

What it is and what is to be done?

(RC)

5-7 marks

RC



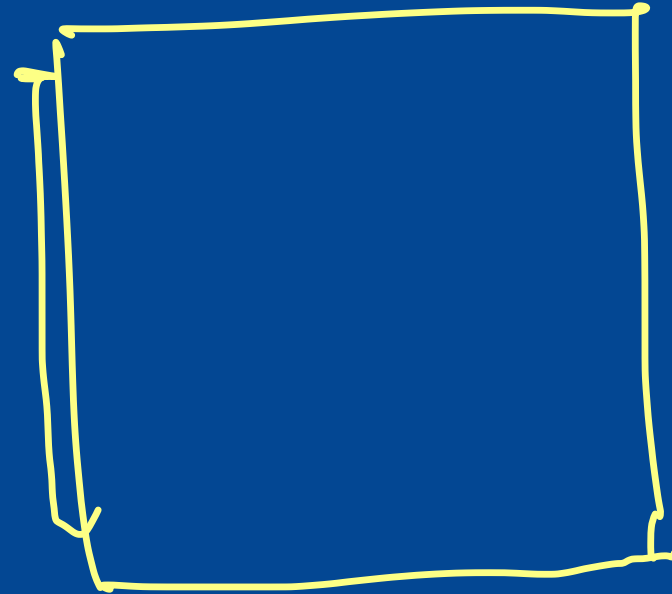
- _____
- _____
- _____
- _____
- _____



Reading Comprehension

Types of questions asked

1. Direct ✓
2. Indirect ✓
3. Theme based ✓
4. Inference based ✓
5. Fill in the blanks ✓
6. Vocabulary (Syn/Ant)



Historical
Scientific
News
Geography





Reading Comprehension

STRATEGIES

- ✓ a. SKIM (Try to get gist of the passage)
- ✓ b. Read questions once
- ✓ c. Read the passage for answers

} 1m

1. mins / Q
2-3 mins

Time → 5Q - Passage → 5 mins
7Q - Passage → 7 mins.



Among the major tasks before us none is of greater importance for our strength and stability than the task of building up the unity and solidarity of our people. Our country often stood like a solid rock in the face of common danger and there is a deep underlying unity which runs like a golden thread through all our seeming diversity. There have been occasions when unfortunate and disturbing divisions, some of them accompanied by violence, have appeared in our society.



Political democracy and the way it has functioned in our country is surely a great achievement. Here again we owe an immeasurable debt to Shri Jawaharlal Nehruji for his deep attachment to democracy as a form of government and as a way of life. There is something in our older cultural heritage too. I have particularly in view that enduring strength in Indian life which can best be described as respect for human personality and the spirit of tolerance. I have no doubt in my mind that it is only by methods of persuasion and mutual accommodation and by constant search for areas of agreement as the basic for action that democracy can work. It is in this spirit that I shall devote myself to the duties and responsibilities of the office I have been called upon to fill.



Of all the problems facing us none is more distressing than that of dire poverty in which tens of millions of our countrymen continue to live. It is my great desire to be able to lighten in some measure the burden of poverty on our people. In this I remember particularly the claims of most backward sections like scheduled castes and scheduled tribes, who have suffered neglect and have had to ensure disabilities for many centuries. It would be my proud privilege to work for the establishment of a more just social order.



Direct

A

1. Shri Nehru was deeply attached to

(a) democracy as a way of life

(b) democracy of the western type

(c) democracy which emerges from our culture

(d) the Indian way of living

Among the major tasks before us none is of greater importance for our strength and stability than the task of building up the unity and solidarity of our people. Our country often stood like a solid rock in the face of common danger and there is a deep underlying unity which runs like a golden thread through all our seeming diversity. There have been occasions when unfortunate and disturbing divisions, some of them accompanied by violence, have appeared in our society.

Political democracy and the way it has functioned in our country is surely a great achievement. Here again we owe an immeasurable debt to Shri Jawaharlal Nehruji for his deep attachment to democracy as a form of government and as a way of life. There is something in our older cultural heritage to ~~be~~ have particularly in view that enduring strength in Indian life which can best be described as respect for human personality and the spirit of tolerance. I have no doubt in my mind that it is only by methods of persuasion and mutual accommodation and by constant search for areas of agreement as the basic for action that democracy can work. It is in this spirit that I shall devote myself to the duties and responsibilities of the office I have been called upon to fill.

Of all the problems facing us none is more distressing than that of dire poverty in which tens of millions of our countrymen continue to live. It is my great desire to be able to lighten in some measure the burden of poverty on our people. In this I remember particularly the claims of most backward sections like scheduled castes and scheduled tribes, who have suffered neglect and have had to ensure disabilities for many centuries. It would be my proud privilege to work for the establishment of a more just social order.



indirect

2. What is the permanent trend in Indian life ?

A

- (a) Respect for human personality
- (b) Love for animals
- (c) Worship of nature
- (d) Hero-worshipping

Among the major tasks before us none is of greater importance for our strength and stability than the task of building up the unity and solidarity of our people. Our country often stood like a solid rock in the face of common danger and there is a deep underlying unity which runs like a golden thread through all our seeming diversity. There have been occasions when unfortunate and disturbing divisions, some of them accompanied by violence, have appeared in our society.

Political democracy and the way it has functioned in our country is surely a great achievement. Here again we owe an immeasurable debt to Shri Jawaharlal Nehruji for his deep attachment to democracy as a form of government and as a way of life. There is something in our older cultural heritage too. I have particularly in view that enduring strength in Indian life which can best be described as respect for human personality and the spirit of tolerance. I have no doubt in my mind that it is only by methods of persuasion and mutual accommodation and by constant search for areas of agreement as the basic for action that democracy can work. It is in this spirit that I shall devote myself to the duties and responsibilities of the office I have been called upon to fill.

Of all the problems facing us none is more distressing than that of dire poverty in which tens of millions of our countrymen continue to live. It is my great desire to be able to lighten in some measure the burden of poverty on our people. In this I remember particularly the claims of most backward sections like scheduled castes and scheduled tribes, who have suffered neglect and have had to ensure disabilities for many centuries. It would be my proud privilege to work for the establishment of a more just social order.



3. The author believes that democracy can work

~~(a) if leaders are honest~~

~~(b) if people participate~~

(c) if method of persuasion and mutual adjustment are employed

(d) if people have faith in democracy

Among the major tasks before us none is of greater importance for our strength and stability than the task of building up the unity and solidarity of our people. Our country often stood like a solid rock in the face of common danger and there is a deep underlying unity which runs like a golden thread through all our seeming diversity. There have been occasions when unfortunate and disturbing divisions, some of them accompanied by violence, have appeared in our society.

Political democracy and the way it has functioned in our country is surely a great achievement. Here again we owe an immeasurable debt to Shri Jawaharlal Nehruji for his deep attachment to democracy as a form of government and as a way of life. There is something in our older cultural heritage too. I have particularly in view that enduring strength in Indian life which can best be described as respect for human personality and the spirit of tolerance. I have no doubt in my mind that it is only by methods of persuasion and mutual accommodation and by constant search for areas of agreement as the basic for action that democracy can work. It is in this spirit that I shall devote myself to the duties and responsibilities of the office I have been called upon to fill.

Of all the problems facing us none is more distressing than that of dire poverty in which tens of millions of our countrymen continue to live. It is my great desire to be able to lighten in some measure the burden of poverty on our people. In this I remember particularly the claims of most backward sections like scheduled castes and scheduled tribes, who have suffered neglect and have had to ensure disabilities for many centuries. It would be my proud privilege to work for the establishment of a more just social order.



4. The writer wants to work for

- (a) just economic order
- ✓ (b) just social order
- (c) democratic forces
- (d) none of the above

Among the major tasks before us none is of greater importance for our strength and stability than the task of building up the unity and solidarity of our people. Our country often stood like a solid rock in the face of common danger and there is a deep underlying unity which runs like a golden thread through all our seeming diversity. There have been occasions when unfortunate and disturbing divisions, some of them accompanied by violence, have appeared in our society.

Political democracy and the way it has functioned in our country is surely a great achievement. Here again we owe an immeasurable debt to Shri Jawaharlal Nehruji for his deep attachment to democracy as a form of government and as a way of life. There is something in our older cultural heritage too. I have particularly in view that enduring strength in Indian life which can best be described as respect for human personality and the spirit of tolerance. I have no doubt in my mind that it is only by methods of persuasion and mutual accommodation and by constant search for areas of agreement as the basic for action that democracy can work. It is in this spirit that I shall devote myself to the duties and responsibilities of the office I have been called upon to fill.

Of all the problems facing us none is more distressing than that of dire poverty in which tens of millions of our countrymen continue to live. It is my great desire to be able to lighten in some measure the burden of poverty on our people. In this I remember particularly the claims of most backward sections like scheduled castes and scheduled tribes, who have suffered neglect and have had to ensure disabilities for many centuries. It would be my proud privilege to work for the establishment of a more just social order.

author



1-5

5. The writer thinks that

(a) we have never faced dangers

(b) in our country there is unity underlying diversity

(c) our society is tribal in organisation

(d) stability of the nation depends upon many factors

Among the major tasks before us none is of greater importance for our strength and stability than the task of building up the unity and solidarity of our people. Our country often stood like a solid rock in the face of common danger and there is a deep underlying unity which runs like a golden thread through all our seeming diversity. There have been occasions when unfortunate and disturbing divisions, some of them accompanied by violence, have appeared in our society.

Political democracy and the way it has functioned in our country is surely a great achievement. Here again we owe an immeasurable debt to Shri Jawaharlal Nehruji for his deep attachment to democracy as a form of government and as a way of life. There is something in our older cultural heritage too. I have particularly in view that enduring strength in Indian life which can best be described as respect for human personality and the spirit of tolerance. I have no doubt in my mind that it is only by methods of persuasion and mutual accommodation and by constant search for areas of agreement as the basic for action that democracy can work. It is in this spirit that I shall devote myself to the duties and responsibilities of the office I have been called upon to fill.

Of all the problems facing us none is more distressing than that of dire poverty in which tens of millions of our countrymen continue to live. It is my great desire to be able to lighten in some measure the burden of poverty on our people. In this I remember particularly the claims of most backward sections like scheduled castes and scheduled tribes, who have suffered neglect and have had to ensure disabilities for many centuries. It would be my proud privilege to work for the establishment of a more just social order.



Engineers India Limited (EIL), a public sector undertaking was set up in 1965. It is the leading design and engineering company in the field of petroleum refineries, petrochemicals, oil and gas processing offshore structures and platforms, fertilisers, metallurgy and power. The services provided by EIL include design, engineering, procurement, construction management, commissioning assistance and project managements besides specialist service in the area of environmental engineering, heat and mass transfer equipment, information technology, materials and maintenance, risk analysis, energy conservation and advance control and optimization. It has to its credit over 4000 assignments including 250 major projects. EIL has exported its services to a number of countries in Asia and Africa.



D
Direct

1. Engineers India Limited is

- (a) an engineering trading organisation
- (b) an IT company
- (c) a petroleum company
- (d) a leading design and engineering company

Engineers India Limited (EIL), a public sector undertaking was set up in 1965. It is the leading design and engineering company in the field of petroleum refineries, petrochemicals, oil and gas processing offshore structures and platforms, fertilisers, metallurgy and power. The services provided by EIL include design, engineering, procurement, construction management, commissioning assistance and project managements besides specialist service in the area of environmental engineering, heat and mass transfer equipment, information technology, materials and maintenance, risk analysis, energy conservation and advance control and optimization. It has to its credit over 4000 assignments including 250 major projects. EIL has exported its services to a number of countries in Asia and Africa.



Assign

2. Engineers India Limited handles

(a) projects both within India and abroad

(b) project only in the private sector within India

(c) only government contracts

(d) projects only within the country

Engineers India Limited (EIL), a public sector undertaking was set up in 1965. It is the leading design and engineering company in the field of petroleum refineries, petrochemicals, oil and gas processing offshore structures and platforms, fertilisers, metallurgy and power. The services provided by EIL include design, engineering, procurement, construction management, commissioning assistance and project managements besides specialist service in the area of environmental engineering, heat and mass transfer equipment, information technology, materials and maintenance, risk analysis, energy conservation and advance control and optimization. It has to its credit over 4000 assignments including 250 major projects. EIL has exported its services to a number of countries in Asia and Africa.



B direct

3. Engineers India Limited does not deal in which of the following area ?

- (a) Heat and mass transfer equipment**
- (b) Cement manufacture**
- (c) Construction management**
- (d) Environment management**

Engineers India Limited (EIL), a public sector undertaking was set up in 1965. It is the leading design and engineering company in the field of petroleum refineries, petrochemicals, oil and gas processing offshore structures and platforms, fertilisers, metallurgy and power. The services provided by EIL include design, engineering, procurement, construction management, commissioning assistance and project managements besides specialist service in the area of environmental engineering, heat and mass transfer equipment, information technology, materials and maintenance, risk analysis, energy conservation and advance control and optimization. It has to its credit over 4000 assignments including 250 major projects. EIL has exported its services to a number of countries in Asia and Africa.



C

4. The services provided by Engineers India Limited include

- (a) water harvesting**
- (b) export duty clearance**
- (c) commissioning assistance**
- (d) financial help**

Engineers India Limited (EIL), a public sector undertaking was set up in 1965. It is the leading design and engineering company in the field of petroleum refineries, petrochemicals, oil and gas processing offshore structures and platforms, fertilisers, metallurgy and power. The services provided by EIL include design, engineering, procurement, construction management, commissioning assistance and project managements besides specialist service in the area of environmental engineering, heat and mass transfer equipment, information technology, materials and maintenance, risk analysis, energy conservation and advance control and optimization. It has to its credit over 4000 assignments including 250 major projects. EIL has exported its services to a number of countries in Asia and Africa.



As heart disease continues to be the number one killer in the United States, researchers have become increasingly interested in identifying the **potential** risk factors that trigger heart attacks. High fat-diets and life in the fast lane have long been known to contribute to the high incidence of heart failure. But according to new studies, the list of risk factors may be significantly longer and quite surprising. Heart failure, e.g., appears to have seasonal and temporal patterns. A higher percentage of heart attacks occurs in cold weather and more people experience heart failure on Monday than on any other day of the week.



In addition, people are more susceptible to heart attacks in the first few hours after waking. Cardiologists first observed this morning phenomenon in the mid 1980 and have since discovered a number of possible causes. An early morning rise in blood pressure, heart rate and concentration of heart stimulating hormones, plus a reduction of blood flow to the heart, may all contribute to the higher incidence of heart attacks between the hours of 8:00 am and 10:00 am. In other studies, both birthday and bachelorhood have been implicated as risk factors.



Statistics reveal that heart attack rate increases significantly for both females and males in the few days immediately preceding and following their birthdays. And unmarried men are more at risk for heart attacks than their married counterparts. Though, stress is thought to be linked in some way to all of the aforementioned risk factors, intense research continues in the hope of future comprehending, why and how heart failure is triggered



1. What does the passage mainly discuss?

- a. Cardiology**
- b. Diet and stress as factors in heart attacks**
- c. Seasonal and temporal patterns of heart attacks**
- d. Risk factors in heart attacks**

As heart disease continues to be the number one killer in the United States, researchers have become increasingly interested in identifying the potential risk factors that trigger heart attacks. High fat-diets and life in the fast lane have long been known to contribute to the high incidence of heart failure. But according to new studies, the list of risk factors may be significantly longer and quite surprising. Heart failure, e.g., appears to have seasonal and temporal patterns. A higher percentage of heart attacks occurs in cold weather and more people experience heart failure on Monday than on any other day of the week.

In addition, people are more susceptible to heart attacks in the first few hours after waking. Cardiologists first observed this morning phenomenon in the mid 1980 and have since discovered a number of possible causes. An early morning rise in blood pressure, heart rate and concentration of heart stimulating hormones, plus a reduction of blood flow to the heart, may all contribute to the higher incidence of heart attacks between the hours of 8:00 am and 10:00 am. In other studies, both birthday and bachelorhood have been implicated as risk factors.

Statistics reveal that heart attack rate increases significantly for both females and males in the few days immediately preceding and following their birthdays. And unmarried men are more at risk for heart attacks than their married counterparts. Though, stress is thought to be linked in some way to all of the aforementioned risk factors, intense research continues in the hope of future comprehending, why and how heart failure is triggered.



SYN

2. The word 'potential' could best be replaced by which of the following?

- a. Harmful
- b. Possible
- c. Unknown
- d. Primary

Vocabulary

As heart disease continues to be the number one killer in the United States, researchers have become increasingly interested in identifying the **potential** risk factors that trigger heart attacks. High fat-diets and life in the fast lane have long been known to contribute to the high incidence of heart failure. But according to new studies, the list of risk factors may be significantly longer and quite surprising. Heart failure, e.g., appears to have seasonal and temporal patterns. A higher percentage of heart attacks occurs in cold weather and more people experience heart failure on Monday than on any other day of the week.

In addition, people are more susceptible to heart attacks in the first few hours after waking. Cardiologists first observed this morning phenomenon in the mid 1980 and have since discovered a number of possible causes. An early morning rise in blood pressure, heart rate and concentration of heart stimulating hormones, plus a reduction of blood flow to the heart, may all contribute to the higher incidence of heart attacks between the hours of 8:00 am and 10:00 am. In other studies, both birthday and bachelorhood have been implicated as risk factors.

Statistics reveal that heart attack rate increases significantly for both females and males in the few days immediately preceding and following their birthdays. And unmarried men are more at risk for heart attacks than their married counterparts. Though, stress is thought to be linked in some way to all of the aforementioned risk factors, intense research continues in the hope of future comprehending, why and how heart failure is triggered.



C

3. According to the passage, which of the following is not a possible cause of many heart attacks?

- a. Decreased blood flow to the heart** ✓
- b. Increased blood pressure** ✓
- ~~c. Lower heart rate~~**
- d. Increase in hormones** ✓

As heart disease continues to be the number one killer in the United States, researchers have become increasingly interested in identifying the potential risk factors that trigger heart attacks. High fat-diets and life in the fast lane have long been known to contribute to the high incidence of heart failure. But according to new studies, the list of risk factors may be significantly longer and quite surprising. Heart failure, e.g., appears to have seasonal and temporal patterns. A higher percentage of heart attacks occurs in cold weather and more people experience heart failure on Monday than on any other day of the week.

In addition, people are more susceptible to heart attacks in the first few hours after waking. Cardiologists first observed this morning phenomenon in the mid 1980 and have since discovered a number of possible causes. An early morning rise in blood pressure, heart rate and concentration of heart stimulating hormones, plus a reduction of blood flow to the heart, may all contribute to the higher incidence of heart attacks between the hours of 8:00 am and 10:00 am. In other studies, both birthday and bachelorhood have been implicated as risk factors.

Statistics reveal that heart attack rate increases significantly for both females and males in the few days immediately preceding and following their birthdays. And unmarried men are more at risk for heart attacks than their married counterparts. Though, stress is thought to be linked in some way to all of the aforementioned risk factors, intense research continues in the hope of future comprehending, why and how heart failure is triggered.



4. Which of the following is cited as a possible risk factor?

- a. Getting married**
- b. Rainy weather**
- c. Eating fatty foods**
- d. Driving fast**

As heart disease continues to be the number one killer in the United States, researchers have become increasingly interested in identifying the potential risk factors that trigger heart attacks. High fat-diets and life in the fast lane have long been known to contribute to the high incidence of heart failure. But according to new studies, the list of risk factors may be significantly longer and quite surprising. Heart failure, e.g., appears to have seasonal and temporal patterns. A higher percentage of heart attacks occurs in cold weather and more people experience heart failure on Monday than on any other day of the week.

In addition, people are more susceptible to heart attacks in the first few hours after waking. Cardiologists first observed this morning phenomenon in the mid 1980 and have since discovered a number of possible causes. An early morning rise in blood pressure, heart rate and concentration of heart stimulating hormones, plus a reduction of blood flow to the heart, may all contribute to the higher incidence of heart attacks between the hours of 8:00 am and 10:00 am. In other studies, both birthday and bachelorhood have been implicated as risk factors.

Statistics reveal that heart attack rate increases significantly for both females and males in the few days immediately preceding and following their birthdays. And unmarried men are more at risk for heart attacks than their married counterparts. Though, stress is thought to be linked in some way to all of the aforementioned risk factors, intense research continues in the hope of future comprehending, why and how heart failure is triggered.



B

5. Which of the following does the passage infer?

- a. We now fully understand how the risk factors trigger heart attacks**
- b. We do not fully understand how the risk factors trigger heart attacks**
- c. We have not identified risk factors associated with heart attacks**
- d. We have recently begun to study how risk factors work**

As heart disease continues to be the number one killer in the United States, researchers have become increasingly interested in identifying the potential risk factors that trigger heart attacks. High fat-diets and life in the fast lane have long been known to contribute to the high incidence of heart failure. But according to new studies, the list of risk factors may be significantly longer and quite surprising. Heart failure, e.g., appears to have seasonal and temporal patterns. A higher percentage of heart attacks occurs in cold weather and more people experience heart failure on Monday than on any other day of the week.

In addition, people are more susceptible to heart attacks in the first few hours after waking. Cardiologists first observed this morning phenomenon in the mid 1980 and have since discovered a number of possible causes. An early morning rise in blood pressure, heart rate and concentration of heart stimulating hormones, plus a reduction of blood flow to the heart, may all contribute to the higher incidence of heart attacks between the hours of 8:00 am and 10:00 am. In other studies, both birthday and bachelorhood have been implicated as risk factors.

Statistics reveal that heart attack rate increases significantly for both females and males in the few days immediately preceding and following their birthdays. And unmarried men are more at risk for heart attacks than their married counterparts. Though, stress is thought to be linked in some way to all of the aforementioned risk factors, intense research continues in the hope of future comprehending, why and how heart failure is triggered.



B

6. What could be the suitable title of the passage?

- a. Heart disease in USA**
- b. Causes of heart attack**
- c. Stress**
- d. Risk of heart attack in humans**

As heart disease continues to be the number one killer in the United States, researchers have become increasingly interested in identifying the potential risk factors that trigger heart attacks. High fat-diets and life in the fast lane have long been known to contribute to the high incidence of heart failure. But according to new studies, the list of risk factors may be significantly longer and quite surprising. Heart failure, e.g., appears to have seasonal and temporal patterns. A higher percentage of heart attacks occurs in cold weather and more people experience heart failure on Monday than on any other day of the week.

In addition, people are more susceptible to heart attacks in the first few hours after waking. Cardiologists first observed this morning phenomenon in the mid 1980 and have since discovered a number of possible causes. An early morning rise in blood pressure, heart rate and concentration of heart stimulating hormones, plus a reduction of blood flow to the heart, may all contribute to the higher incidence of heart attacks between the hours of 8:00 am and 10:00 am. In other studies, both birthday and bachelorhood have been implicated as risk factors.

Statistics reveal that heart attack rate increases significantly for both females and males in the few days immediately preceding and following their birthdays. And unmarried men are more at risk for heart attacks than their married counterparts. Though, stress is thought to be linked in some way to all of the aforementioned risk factors, intense research continues in the hope of future comprehending, why and how heart failure is triggered.



A

70

7. Which word can be the most opposite word of

'unlikely'? → not expecting



a. Susceptible

→ easily influenced

b. Stimulating

→ exciting/interesting

c. Implicated

→ something unpleasant

d. Aforementioned

↳ mentioned before.

As heart disease continues to be the number one killer in the United States, researchers have become increasingly interested in identifying the potential risk factors that trigger heart attacks. High fat-diets and life in the fast lane have long been known to contribute to the high incidence of heart failure. But according to new studies, the list of risk factors may be significantly longer and quite surprising. Heart failure, e.g., appears to have seasonal and temporal patterns. A higher percentage of heart attacks occurs in cold weather and more people experience heart failure on Monday than on any other day of the week.

In addition, people are more susceptible to heart attacks in the first few hours after waking. Cardiologists first observed this morning phenomenon in the mid 1980 and have since discovered a number of possible causes. An early morning rise in blood pressure, heart rate and concentration of heart stimulating hormones, plus a reduction of blood flow to the heart, may all contribute to the higher incidence of heart attacks between the hours of 8:00 am and 10:00 am. In other studies, both birthday and bachelorhood have been implicated as risk factors.

Statistics reveal that heart attack rate increases significantly for both females and males in the few days immediately preceding and following their birthdays. And unmarried men are more at risk for heart attacks than their married counterparts. Though, stress is thought to be linked in some way to all of the aforementioned risk factors, intense research continues in the hope of future comprehending, why and how heart failure is triggered.



MEANINGS

- a. **Susceptible - easily influence – affected by something**
- b. **Stimulating – Exciting / Interesting**
- c. **Implicated – Involving something unpleasant**
- d. **Aforementioned – Mentioned before**

**MAH-CET 2024 FOR
BCA BBA BBM BMS**



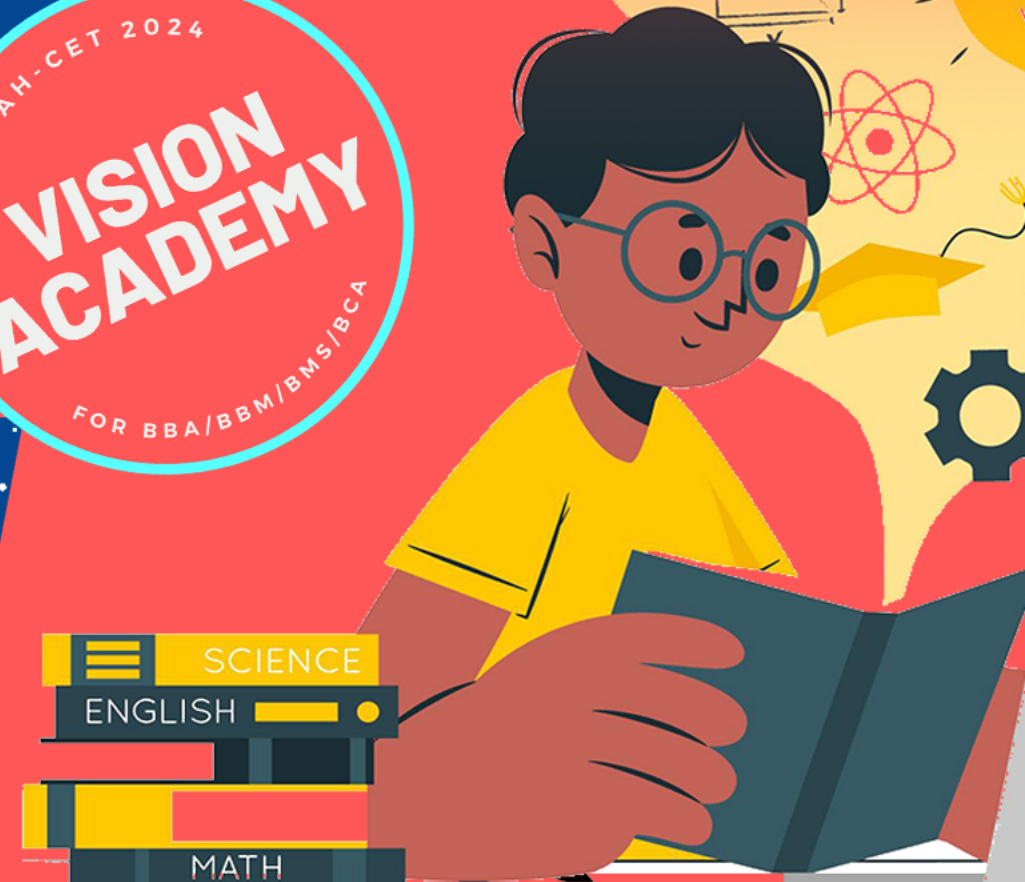
**CRASH
COURSE**

DAY - 2

REASONING



**CODING-
DECODING**





DOWNLOAD TODAY'S LECTURE NOTES & WORKSHEET

JOIN US ON  WHATSAPP



FOR MAH-CET 2024 FOR BBA/BMS/BBM/BCA



JOIN US ON  TELEGRAM



FOR MAH-CET 2024 FOR BBA/BMS/BBM/BCA

