

MAH-CET 2024 FOR
BCA BBA BBM BMS

DAY - 26

COMPUTER

SOFTWARE



CRASH
COURSE





**TOTAL
QUESTIONS
TODAY:**

10

FOR MORE UPDATES
UPDATETODAY.IN



Subscribe



DOWNLOAD TODAY'S LECTURE NOTES & WORKSHEET

JOIN US ON  WHATSAPP



FOR MAH-CET 2024 FOR BBA/BMS/BBM/BCA



JOIN US ON  TELEGRAM



FOR MAH-CET 2024 FOR BBA/BMS/BBM/BCA





What is Software

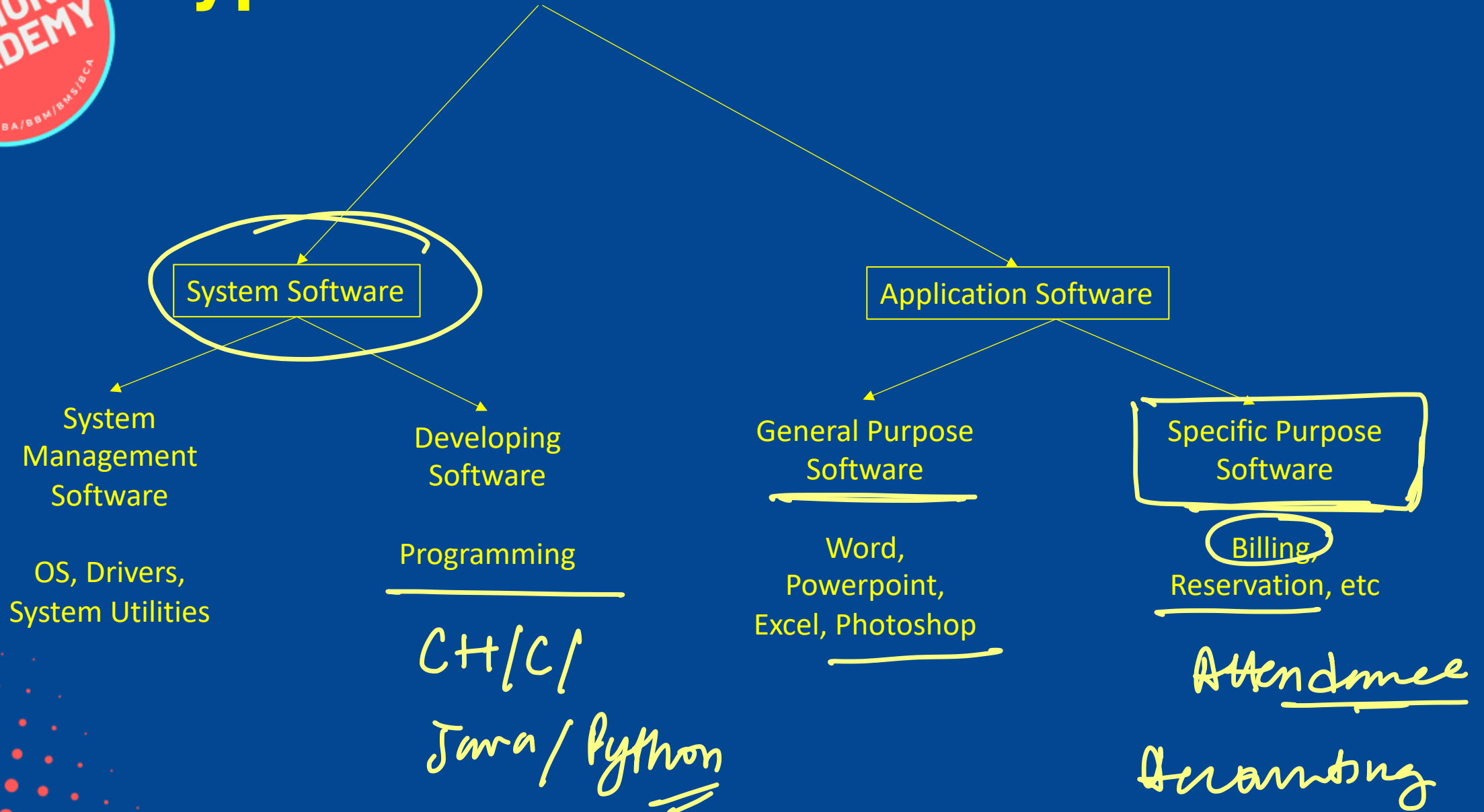
A software is a collection of data and instructions that guides the computer what to do and how to do it.

A software is an interface between user and computer hardware.

↓
Monitor
CPU
Key / mouse.



Types of Software:





System Management Programs / Software

It includes an integrated system of programs which manages the operations of the processor, controls input and output, manages storage and services.

Eg. Operating System



Operating System

It consists of programs, which controls, coordinates and supervises the activities of the various components of a computer system. Its function is to provide link between the computer hardware and the user.

It performs all internal management functions (disk access, memory management, task scheduling and user interfacing) and ensures systematic functioning of a computer system. It provides an environment to run the programs.

e.g., MS-DOS, Windows XP/2000/98/10/11, Unix, Linux, macOS, etc.

FREE

XP / Vista / 7 / 10 / Windows 11
paid

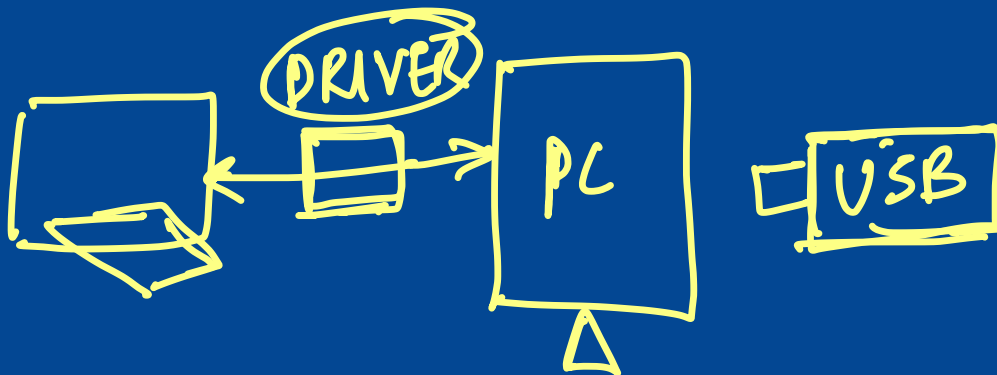
→ Apple / Macs



Device Drivers

A software, which is written with the objective of making a device functional when it is connected to the computer is called device driver

- Device drivers are a set of instructions that introduce our PC to a hardware device.





System Utilities

These programs perform tasks related to the maintenance of the computer system.

These are the packages which are loaded into computer during time of installation of operating system.

They are used to support, enhance, expand and secure existing programs and data in the computer system.

E.g. Antivirus, Compression, Backup, etc.



Developing Software

Development of
Software

It is a software which provides service required for the development and execution of application software. The programming languages, language translator, loader, linker are required for the application software development.



Application Software

Application software is a computer software designed to help the user to perform singular or multiple tasks.

It is a set of instructions or program designed for specific uses or applications, that enable the user to interact with a computer.

Application software are also called the end-user programs.



Word Processing Software

A word processor is a software program capable of creating, storing and printing of documents. Word processors have the ability to create a document and make changes anywhere in the document. This document can also be saved for modification later on or be opened on any other computer using the same word processor.

e.g., Microsoft Word, etc.



Presentation Software

Presentation is the practice of showing and explaining the contents of a topic to an audience or learner visually. People, in a variety of settings and situations, use presentation software to make their presentations more interesting and professional.

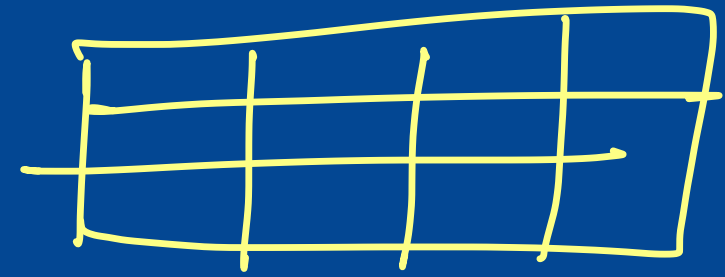
e.g. marketing managers use presentation graphics to present new marketing strategies to their superiors.

e.g., Microsoft PowerPoint, etc.

Apple mac-
Keynote



Spreadsheets



Spreadsheet applications (sometimes referred to simply as spreadsheets) are the computer programs that accept data in a tabular form and allow you to create and manipulate spreadsheets electronically.

The relationships between cells are called Formulas and the names of the cells are called Labels.

e.g., Microsoft Excel, etc.



DBMS

Data → Store/Manage

A DBMS (Database Management System) refers to the software that is responsible for sorting, maintaining and utilizing a database. It enables a user to define, create and maintain the database and provide controlled access on it. A database is a collection of integrated data stored together to serve multiple applications.

e.g. Microsoft Access, MySQL, etc.



Specific Purpose Software

Specific purpose software are designed to perform specific tasks.

This type of application software generally has one purpose to execute.



Accounting Software

Accounting software is an application software that records and processes accounting transactions within functional modules such as accounts payable, accounts receivable, payroll and trial balance. It works as an accounting information system.

e.g. Tally Busy, etc.

↓ ↑ payroll



Booking

Reservation System

IRCTC web-

A reservation system or central reservation system (CRS) is a computerized system used to store and retrieve information and conduct transactions related to air travel, hotels, car rental, or other activities. It is an application software which is commonly seen at railway reservation offices, this software helps the concerned department to automatically check the availability of the seats or berths of any train and any particular date with incomparable speed.



1. The software tools that enable a user to interact
with a computer for specific purposes are known as

- A. hardware
- B. networked software
- C. shareware
- ✓ D. applications

①



2. The operating system is the most common type of software.

A. communication

B. application

C. system

D. word-processing



3. A set of rules for telling the computer what operations to perform is called a _____

A. procedural language —

B. structures —

C. natural language —

D. programming language —



4. Which of the following is not an operating system?

A. Windows 10

B. Windows XP

C. ~~Linux~~ Linux

D. Microsoft Word

} os.



5. Which of the following software is used to develop softwares?

- A. System software
- B. Application Software
- C. Programming software
- D. General Purpose Software



6. Which of the following is not a programming language?

A. JAVA

B. C

C. C++

D. Word

} PL.



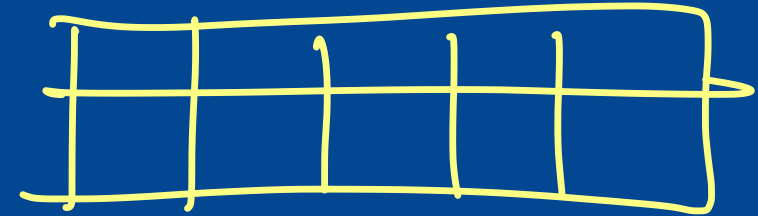
7. Which software is used to create and edit tabular data in computer?

A. Excel

B. Word

C. Powerpoint

D. DBMS





8. Which application is used to access internet on a computer?

A. Word ✓

B. Browser ✓

C. Excel ✓

D. Photoshop ✓



9. What kind of software is Tally?

- A. General Purpose
- B. Specific Purpose
- C. OS
- D. System Software

→ Accounting

SPE CIFIC



16. What does an operating system do?

A. An interface that regulates hardware and software programs

B. A hardware device ✗

C. A program that operates the hardware devices ✗

D. All of the above

(A)



GK & CURRENT AFFAIRS **DAILY BUNDLE** ENROLL NOW



18th May

Rs.200 only



**MAH-CET 2024 FOR
BCA BBA BBM BMS**

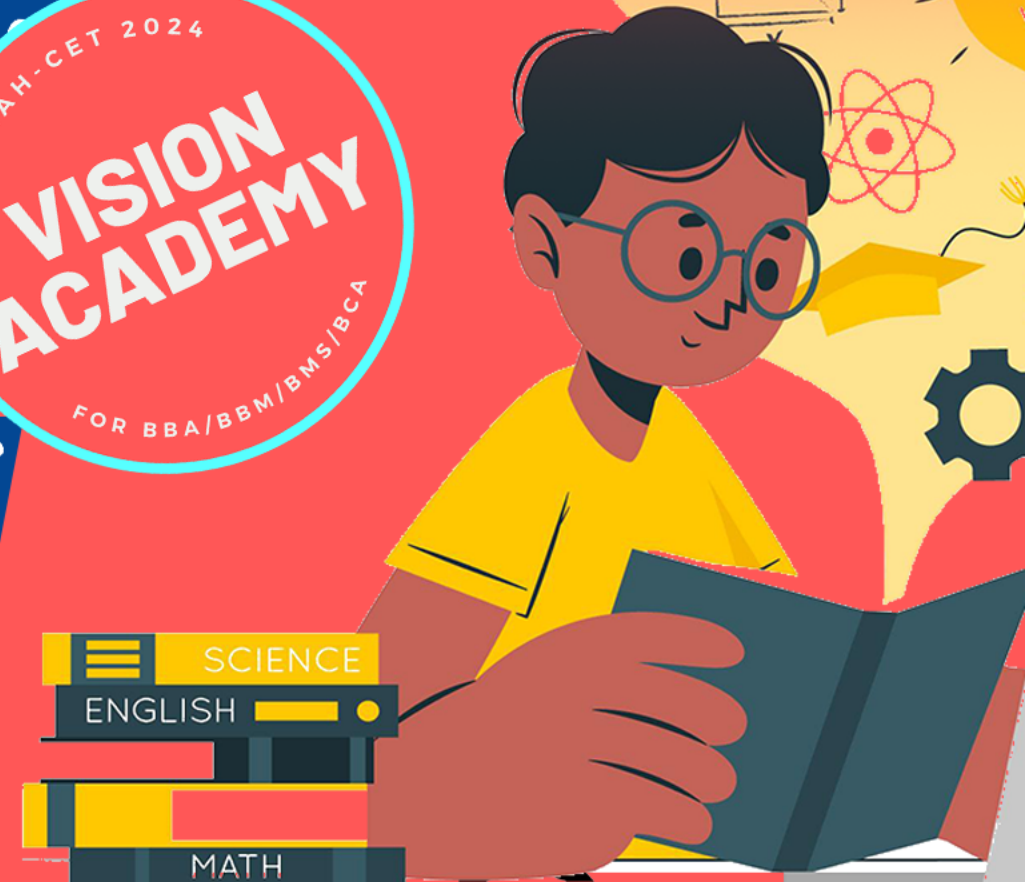
DAY - 27

ENGLISH

**IDIOMS &
PHRASES**



**CRASH
COURSE**





DOWNLOAD TODAY'S LECTURE NOTES & WORKSHEET

JOIN US ON  WHATSAPP



FOR MAH-CET 2024 FOR BBA/BMS/BBM/BCA



JOIN US ON  TELEGRAM



FOR MAH-CET 2024 FOR BBA/BMS/BBM/BCA

