

REASONING

Analogy Classification Worksheet for MAH MCA CET 2025

For students preparing for MCA Entrance Exam.

- REASON : SFBTPO :: THINK : ?
 - SGHMJ
 - UIJOL
 - UHNKI
 - UJKPM
- Carbon : Diamond :: Corundum : ?
 - Garnet
 - Ruby
 - Pukhraj
 - Pearl
- NATION : ANTINO :: HUNGRY : ?
 - HNUGRY
 - UHNGYR
 - YRNGUH
 - UNHGYR
- Eye : Myopia :: Teeth : ?
 - Pyorrhoea
 - Cataract
 - Trachoma
 - Eczema
- Melt : Liquid :: Freeze : ?
 - Ice
 - Condense
 - Solid
 - Force
- College : Student :: Hospital : ?
 - Nurse
 - Doctor
 - Treatment
 - Patient
- Cloth : Mill :: Newspaper : ?
 - Editor
 - Reader
 - Paper
 - Press
- BEGK : ADFJ :: PSVY : ?
 - ROUX
 - ORUX
 - LQUT
 - LOQT
- AZBY : CXDW :: EVFU : ?
 - GTHS
 - GHTS
 - GSTH
 - TGSH
- ACEG : IKMO :: QSUW : ?
 - YZCE
 - YACD
 - YACE
 - YBCE
- BCFG : HILM :: NORQ : ?
 - TXWU
 - TXUW
 - TUXW
 - TVWX
- ZRYQ : KCJB :: PWOV : ?
 - GBHA
 - ISJT
 - ELDK
 - EOFP
- PASS : QBTT :: FAIL : ?
 - GJBM
 - GBJM
 - MBJG

- D. MJBG
14. BLOCKED : YOLXPVW :: ? : OZFMXS
 A. DEBATE
 B. RESULT
 C. LABOR
 D. LAUNCH
15. CEDH : HDEC :: ? : PNRV
 A. VRNP
 B. RNPV
 C. NRVP
 D. VNRV
16. DFHJ : LNPR :: TVXZ : ?
 A. DBFH
 B. DBHF
 C. BDFH
 D. FDBH
17. ACEG : ? :: BDFH : KMOQ
 A. NLPR
 B. LMNO
 C. JLNP
 D. JNLO
18. FIELD : GJFME :: SICKLE : ?
 A. RHBJKD
 B. RHJBKD
 C. TJLDMF
 D. TJDLMF
19. ? : QEHMDF :: WIDELY : HVCDXK
 A. FRINGE
 B. STRING
 C. FRANCE
 D. DEMAND
20. ACFJ : ZXUQ :: EGIN : ?
 A. VUSQ
 B. UTRP
 C. VRPM
 D. VTRM
21. Fetter: Liberate
 A. Shackle: Loose
 B. Common: Ghostly
 C. Routine: Novel
 D. Secular: Clerical
22. Umpire: Game
 A. Prodigy : Wonder
- B. Chef: Banquet
 C. Legislator: Election
 D. Moderator: Debate
23. Confession: Testimony
 A. Crime: Petition
 B. Autobiography: Biography
 C. Edition: Correction
 D. Witness: Judgement
- Directions (Nos. 24 - 31) In each of the following questions, there is name relationship between the two terms of the left of ':' and the same relationship holds between the two terms to right Also, in each question, one term to the right of ':' is missing. This term is given as one of the alternatives, from the gives alternatives below each question. Find out this Term from given alternatives.
24. FJUL: BOQQ:: LHRX: ?
 A. BKPR
 B. MNCC
 C. HRYY
 D. HMNC
25. EJOT: VQLG :: BGLQ: ?
 A. AEIM
 B. AFKP
 C. YTOJ
 D. ZUPK
26. AZBY : BYAZ :: BXCW : ?
 A. CWBX
 B. CWDX
 C. BWXZ
 D. BWWZ
27. EIGHTY : GIEYTH :: OUTPUT : ?
 A. TUOTUP
 B. TUOUTP
 C. UTOPTU
 D. UOTUPT
28. CLOCK : CNSIS :: WATCH : ?
 A. WBWHO
 B. WCXIP
 C. WBVFL
 D. WCVEJ
29. CARPET: RACTEP :: GOBLET: ?
 A. BOTGFL
 B. BOGTEL

- C. COGTLE
- D. DPOTEL

30. BEST: WVHE :: CROP: ?
- A. SRVG
 - B. SRUF
 - C. RTUF
 - D. PRUM

31. LUX: 57:: SIT: ?
- A. 48
 - B. 68
 - C. 41
 - D. 35

Directions (Q.32-38) In each of the following questions, there is a certain relationship between two given numbers on one side of and one number is given on the other side of while another number is to be found from the given alternatives having the same relationship with this number as the numbers of the given pair. Choose the best alternatives.

32. 20: 11: 102:?
- A. 49
 - B. 52
 - C. 61
 - D. 98

33. 7:56::9:?
- A. 63
 - B. 81
 - C. 90
 - D. 99

34. 42:56::110:?
- A. 18
 - B. 132
 - C. 136
 - D. 140

35. 9:162:8:?
- A. 162
 - B. 128
 - C. 96
 - D. 112

36. 32:13::27:?
- A. 43
 - B. 28
 - C. 53
 - D. 40

37. 16:240::6:?
- A. 25
 - B. 35
 - C. 40
 - D. 30

38. 6:18::14:?
- A. 64
 - B. 98
 - C. 108
 - D. 70

Answer Key

1. B	2. B	3. B	4. A	5. C	6. D	7. D	8. B	9. A	10. C
11. C	12. C	13. B	14. D	15. A	16. C	17. C	18. D	19. A	20. D
21. A	22. C	23. A	24. D	25. C	26. A	27. A	28. B	29. B	30. B
31. A	32. B	33. C	34. B	35. B	36. C	37. D	38. B		

HINTS & SOLUTIONS

1.

As	Similarly
$R \xrightarrow{+1} S$	$T \xrightarrow{+1} U$
$E \xrightarrow{+1} F$	$H \xrightarrow{+1} I$
$A \xrightarrow{+1} B$	$I \xrightarrow{+1} J$
$S \xrightarrow{+1} T$	$N \xrightarrow{+1} O$
$O \xrightarrow{+1} P$	$K \xrightarrow{+1} L$
$N \xrightarrow{+1} O$	

2. As Diamond is made of Carbon similarly Ruby is made of Corundum.

3.

As	Similarly
$\begin{array}{c} N \nearrow A \\ A \searrow N \end{array}$	$\begin{array}{c} H \nearrow U \\ U \searrow H \end{array}$
$T \longrightarrow T$	$N \longrightarrow N$
$I \longrightarrow I$	$G \longrightarrow G$
$\begin{array}{c} O \nearrow N \\ N \searrow O \end{array}$	$\begin{array}{c} R \nearrow Y \\ Y \searrow R \end{array}$

4. As Myopia is disease of eye similarly pyorrhoea is a disease of teeth.

8.

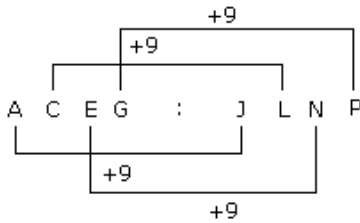
As	Similarly
$B \xrightarrow{-1} A$	$P \xrightarrow{-1} O$
$E \xrightarrow{-1} D$	$S \xrightarrow{-1} R$
$G \xrightarrow{-1} F$	$V \xrightarrow{-1} U$
$K \xrightarrow{-1} J$	$Y \xrightarrow{-1} X$

9.

As	Similarly
$A \xrightarrow{+2} C$	$E \xrightarrow{+2} G$
$Z \xleftarrow{+2} X$	$V \xleftarrow{+2} T$
$B \xrightarrow{+2} D$	$F \xrightarrow{+2} H$
$Y \xleftarrow{+2} W$	$U \xleftarrow{+2} S$

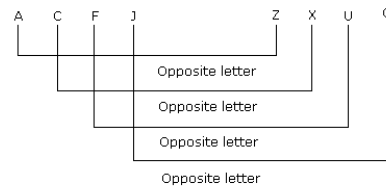
10.

As,

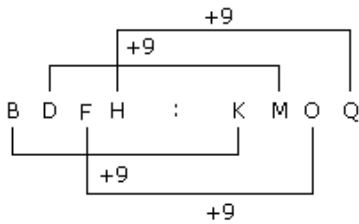


Note: ABCDEFGHIJKLMNOPQRSTUVWXYZ
 ↓ ↓ ... ↓
 ZYXWVUTSRQPONMLKJIHGFEDCBA

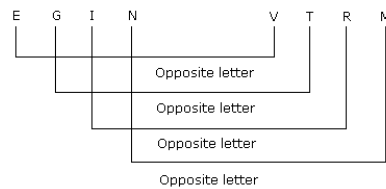
As,



Similarly,

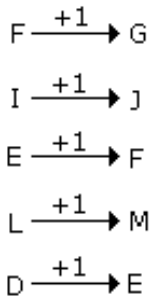


Similarly,

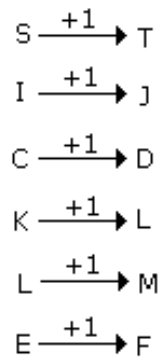


18.

As

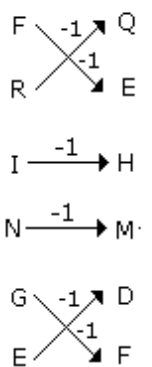


Similarly

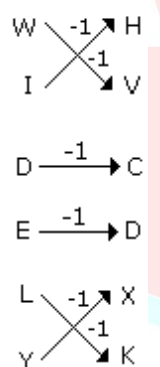


19.

As



Similarly



20.