

FREE COURSE FOR BBA BBM BMS BCA

DAY 27

GK

GENERAL AWARENESS



7

INVINCIBLE 2.0
MAH CET BBA BCA
& CUET UG GT 2025





JOIN US ON  WHATSAPP



Subs

JOIN US ON  TELEGRAM



FOR MAH CET FOR BBA BBM BMS BCA
& CUET UG PAPER 3 GENERAL TEST

GK & CURRENT AFFAIRS **BUNDLE 2.0** ENROLL NOW

Rs.199 only



**Current Affairs
+ General
Knowledge
Worksheets**



**Your roadmap
for success in 2025**

How to purchase?

**Scan the QR Code
to purchase now**



Or visit the link below:

rzp.io/rzp/VAGKB

No need to fill any Google form if you buy from above link.
You will receive email notification
immediately after successful payment.



9 SINGULARITY SOLUTIONS

GK & Current Affairs Bundle 2.0



GK & Current Affairs Bundle 2.0 is designed for all aspirants of MAH CET 2025 targeting BBA, BCA, BMS, BBM, Integrated MBA, Integrated MCA, and CUET 2025 UG General Test Paper 3.

Having been one of the most popular resources for students, it played a key role in the success of many candidates preparing for MAH CET 2024 for BBA and BCA programs.

PLEASE NOTE:

1. You do not need to fill any Google form if you are purchasing from here. You will receive an email confirmation post successful payment.

Payment Details

Amount	₹ 199.00
Name	<input type="text"/>
Email	<input type="text"/>
Mobile Number	<input type="text"/>
WhatsApp Number	<input type="text"/>
City	<input type="text"/>

LIPID VISA RuPay

Pay ₹ 199.00



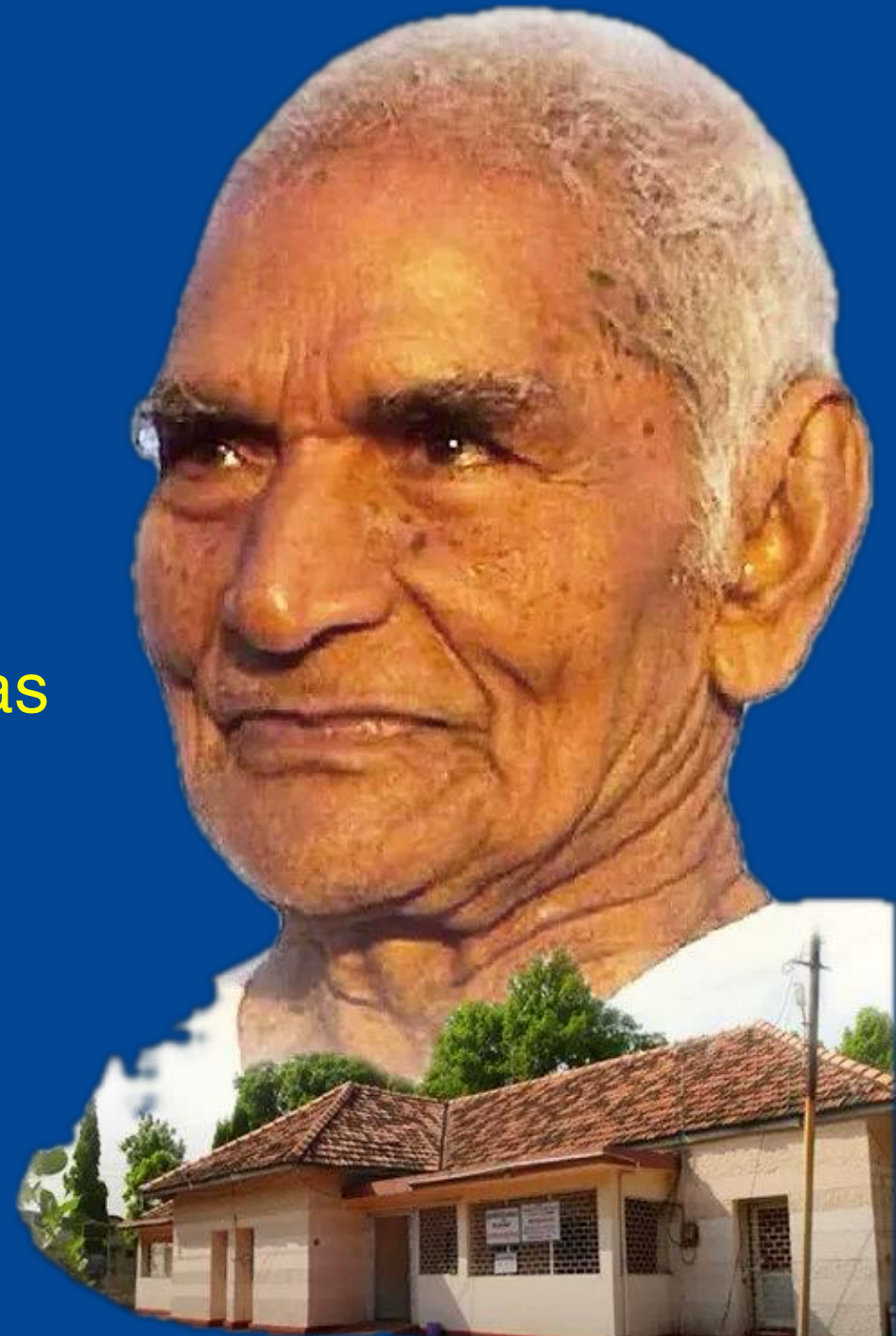
176

'Anandwan' is associated with

- A) Vinoba Bhave
- ~~B) Baba Amte~~
- C) Indira Gandhi
- D) Mahatma Gandhi



Anandwan is associated with Murlidhar Devidas Amte popularly known as Baba Amte, an Indian social activist and social worker. Amte founded Anandwan in 1949 as a center for the treatment and rehabilitation of leprosy patients.





177

'Phoenix Settlement' is associated with

- ☒ - A) Mahatma Gandhi
- B) J L Nehru
- C) Rabindranath Tagore
- D) None of these



Phoenix Settlement was founded by Mahatma Gandhi in 1904 in Durban South Africa. It was the place where Gandhi ji practised his first 3 principles Satyagrah, Sarvoday, and Ahimsa.



178

Myopia is a disease connected with

- A) Lungs .
- B) brain .
- C) ears .
- ☒ - D) eyes .



hypermetropia
Myopia, hyperopia, and presbyopia are all common eye conditions that affect how light focuses on the retina.

Myopia

Also known as nearsightedness, this condition causes far-away objects to appear blurry. It occurs when the eyeball is too long or the cornea or lens is shaped incorrectly.

Hyperopia

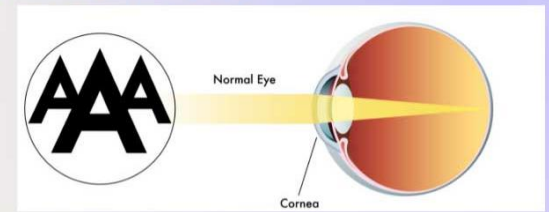
Also known as farsightedness, this condition causes nearby objects to appear blurry. It occurs when the eyeball is too short or the cornea or lens is shaped incorrectly.

Presbyopia

This condition makes it difficult to see things up close, especially for middle-aged and older adults. It occurs when the lens in the eye hardens and becomes less flexible.

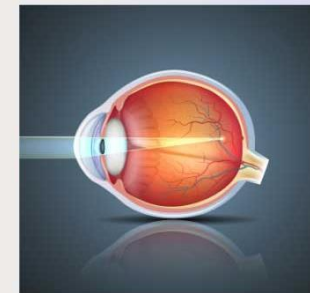
NORMAL EYE

Light rays enter the pupil and pass through the cornea and eye lens. The focal point reaches the back of the retina creating a clear image.



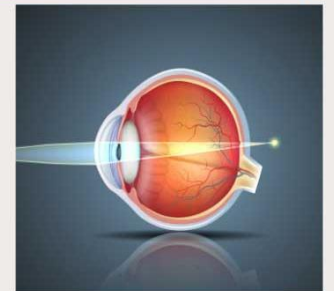
MYOPIA

Light rays enter the eye but the focal point is in front of the retina and does not reach the surface. Causing images in the distance to be blurred.



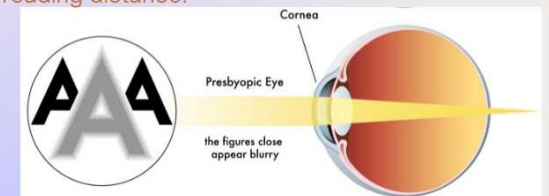
HYPEROPIA

The focal point of the light rays entering the eye are behind the retina causing visions closeup but clear vision in the distance.



PRESBYOPIA

Similar to Hyperopia where the focal point of the light rays reach behind the retina. However the cause is the physical change in the eye lens creating blurred images at reading distance.





179

The weight of a body acts through the centre of _____

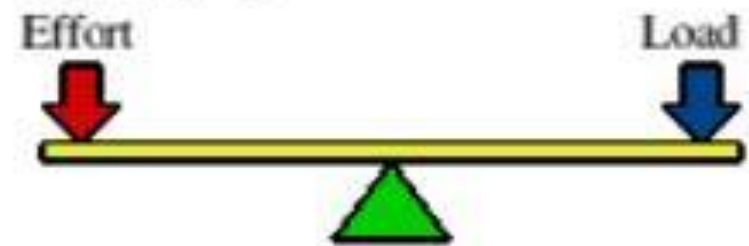
- ✓ - A) gravity .
- B) mass .
- C) both (a) and (b) .
- D) buoyancy .

A wheel-barrow is an example of

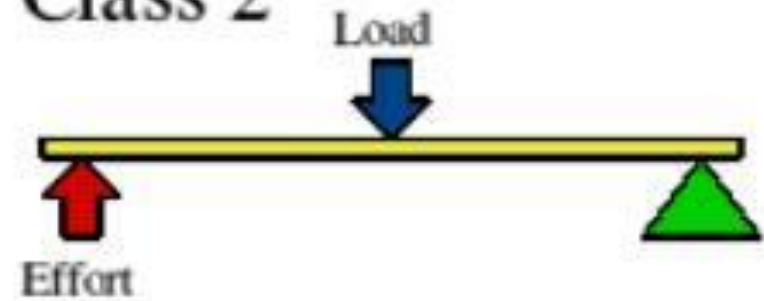
- A) class III lever
- B) pulley system
- C) class I lever
- ✓ - D) class II lever



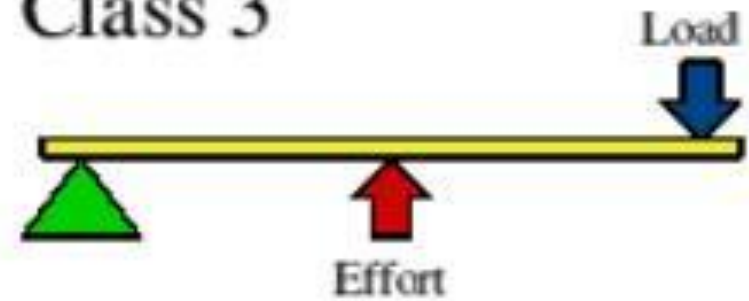
Class 1



Class 2



Class 3





181

Combustion of a candle is a/an

- A) photochemical reaction
 - B) physical change
 - C) endothermic reaction
 - ✓ - D) exothermic reaction
- heat releases



An exothermic reaction is a chemical reaction that releases energy in the form of light or heat. The burning of the candle is an exothermic reaction.

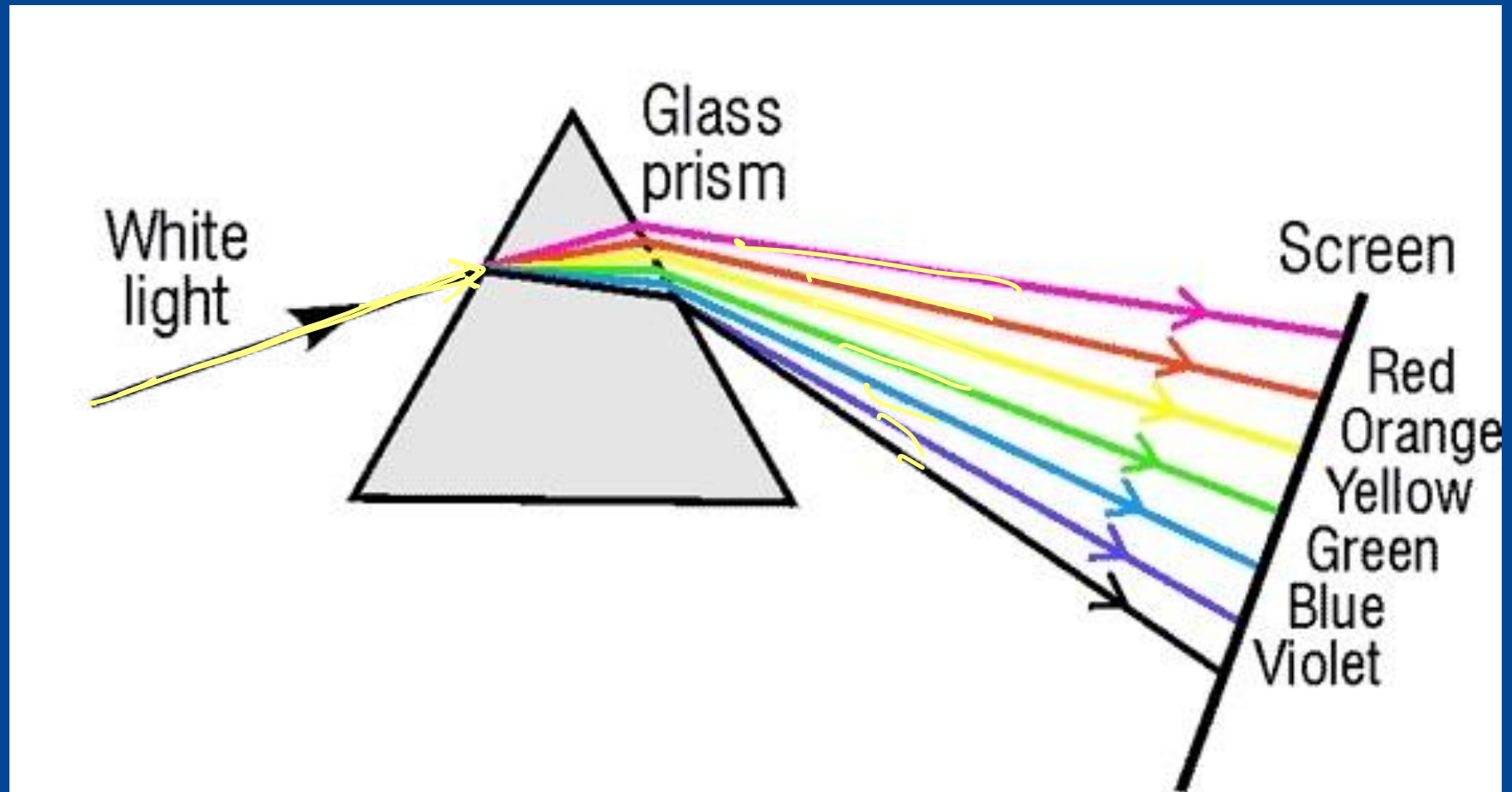
[Endothermic reactions - Heat is absorbed, example melting ice is an endothermic process]



The splitting of white light into its components is due to

182

- A) transmission
- ☒ B) dispersion
- C) reflection
- D) refraction





183

A small drop of oil spreads over water because

- A) oil has a higher viscosity
- B) water has a higher viscosity
- C) oil has a higher surface tension
- ~~D) water has a higher surface tension~~



The surface tension of the water is more than that of oil. Therefore, when oil is poured over water, the greater value of surface tension of water pulls oil in all directions, and as such it spreads on the water.



An object which absorbs all colours and reflects none appears

184

- A) blue .

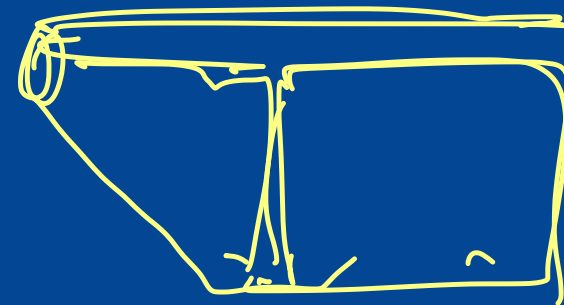
- ~~B) black~~ . vanta black

- C) white

- D) grey .

Radiations which is not emitted during radioactivity is

- A) γ -rays - (gamma rays)
- ~~B) cathode rays~~ [CRT]
- C) α -rays - (alpha)
- D) β -rays (beta)





Alpha rays: Consist of helium nuclei (positively charged).

Beta rays: Consist of high-speed electrons (negatively charged).

Gamma rays: High-energy electromagnetic radiation with no charge.



Magnetic keepers are used to protect magnets from

186

- ~~A) self-demagnetization~~
- B) demagnetization due to heating
- C) Earth's magnetic field
- D) effect of other magnets



187

The quantity 'weight' is measured by

- A) beam balance
- B) common balance
- ~~C) spring balance~~
- D) balance wheel



188

The principle due to which circular patches of light is seen under a tree during day time, is similar to that of image formation by a



- A) concave lens

~~- B) pinhole~~

- C) photographic camera

- D) convex lens



189

A compass needle cannot be used to detect

- A) ~~✓~~ magnetic North-South direction
- B) ~~✓~~ polarity of a magnet
- C) ~~✓~~ strength of a magnet
- D) ~~✓~~ direction of magnetic field



190

In which medium, velocity of sound is maximum?

↓
denser medium ↑

- ☒ A) Metals
- B) Air
- C) Water
- D) Polymer



191

Decibel is used to measure the intensity of

- A) magnetic field (Tesla)

☒ - B) sound

- C) light → (lumens)

- D) heat → (joules)



192

Decibel is a term connected with

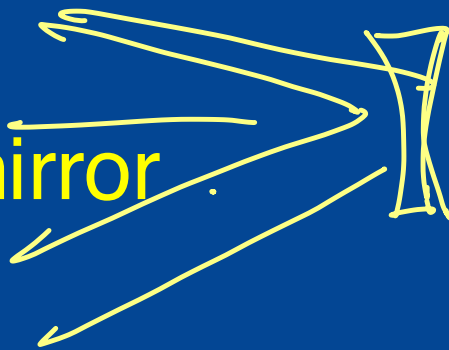
- A) air
- B) water
- ☒ C) sound
- D) soil



193

Which type of mirror is used in the head lights of vehicles?

- A) Plane mirror
- ☒ - B) Concave mirror
- C) Convex mirror
- D) Parabolic mirror





194

The height of a geo-stationary satellite from the Earth's surface is approximately

- ☒ A) 36000 km
- B) 42000 km
- C) 30000 km
- D) None of these



The best conductor of electricity among the following is

195

- A) Copper .
- B) Iron .
- C) Aluminium .
- ~~D) Silver .~~



196

The angle in which a cricket ball should be hit to travel maximum horizontal distance is

- A) 60° with horizontal
- ~~B) 45° with horizontal~~
- C) 30° with horizontal
- D) 15° with horizontal

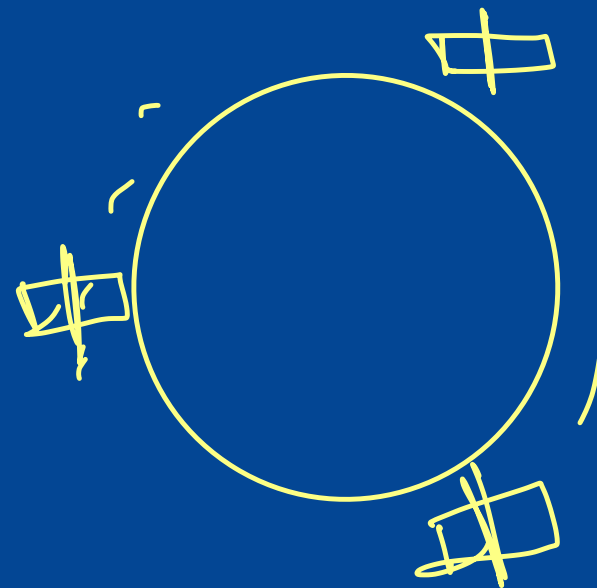




197

The minimum number of geostationary satellites needed for uninterrupted global coverage is

- A) 2
- B) 4
- ~~- C) 3~~
- D) 1





198

Natural rubber is the polymer of

- ☒ - A) Isoprene .
- B) Styrene .
- C) Butadiene .
- D) Ethylene .



199

In addition to hydrogen, the other abundant element present on Sun's surface is

- ~~A) Helium~~ ←
- B) Neon
- C) Argon
- D) Oxygen



200

A nuclear reaction must be balanced in terms of

- A) mass and volume
- B) energy and weight
- C) number of electrons
- ☒ - D) mass and energy



JOIN US ON  WHATSAPP



GURBS

JOIN US ON  TELEGRAM



FOR MAH CET FOR BBA BBM BMS BCA
& CUET UG PAPER 3 GENERAL TEST